



NAME	MX Acrylic Finish
TYPE	Acrylic based, textured coating used over prepared stucco, concrete, and masonry surfaces.
APPLICATION METHOD	Trowel or spray applied
Description:	MX Acrylic Finish is based on a 100% acrylic resin. It is specifically formulated to provide a durable, weather-resistant exterior finish over conventional stucco brown coats, Merlex Basex, and monolithic concrete or unit masonry. Colors may be selected from the Merlex Stucco Color Chart or special color matching services are available.
Packaging:	MX Acrylic Finish is packaged in 65 lb. pails. See product identification label for weights of individual products.
Coverage:	The following coverages are estimates. The condition and type of substrate, application method, and texture will affect coverage. Medium: 125-145 sq. ft. or 12-14 sq. meters Fine: 130-150 sq. ft. or 12-14 sq. meters Super Fine: 130-150 sq. ft. or 12-14 sq. meters
Ordering Color:	For color uniformity, order for entire job wherever possible. Color comes in separate color vials, or pre-mixed in pails at an extra charge.
Surface Preparation:	Surfaces must be structurally sound, clean, and dry. MX Acrylic Finish may not be applied to frozen surfaces or surfaces containing frost. Surfaces shall be free of all bond-inhibiting materials including dirt, efflorescence, and other foreign matter. Loose material shall be removed by water blasting, sandblasting, or by mechanical wire brushing. Avoid application over uneven surfaces. Level all surfaces by re-skimming with a Portland cement and sand basecoat such as Merlex Insulex or Merlex Basex. Basecoats must be cured a minimum of 24-48 hours before the application of MX Acrylic Finish.
Mixing:	Mix to a uniform consistency using a paddle-mixing device at an operating speed of 300 - 450 RPM. Up to 8 oz. of water may be added per pail, to bring to desired working consistency. Add equal amounts of water to all subsequent pails to assure color uniformity.
Mixing with color vials:	Dig out a small hole in the top of material and pour color from vial directly into the hollowed-out area. Add a small amount of water to the color vial, shake for 10 seconds and pour the remaining color out of the bottle into the pail. Care must be taken to add the same amount of water to each additional color vial that is added to each additional pail. Mix with a paddle mixer, as described above, to thoroughly mix all liquid pigment with the base material.
Intermixing Pails:	For best results, all pails of colored materials should be intermixed or 'boxed' to assure consistent color throughout the job. Premixed pails and pails colored with color packages, when used on the same project, must be intermixed.
Application Tools For MX Acrylic Finish:	MX Acrylic Finish shall be applied with a steel trowel and floated with either a steel trowel, neoprene float, or plastic float. For maximum color uniformity, it is recommended to use Merlex MX Primer. Where MX Acrylic Finish is to be applied over any areas that have a variation in surface porosity, the use of Merlex MX Primer is required. Priming during hot and windy conditions is recommended.



Application: Medium Texture:



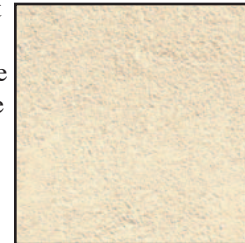
Medium

MX Acrylic Finish is initially applied with a stainless steel trowel at a thickness slightly greater than the largest aggregate in the mix. Apply finish in a continuous operation, avoiding cold joints. Finishing and floating a joint must always occur over a wet edge. Multi-story walls must be worked simultaneously. MX Acrylic Finish should be applied up to natural breaks such as inside or outside corners. Depending on the moisture content of the substrate and weather conditions, MX Acrylic Finish may be required to be floated immediately or be allowed to stand for a few minutes. Float with either a plastic float or stainless steel trowel. Float only enough to achieve the desired finish. Do not over-float or the material may become discolored. Roll finish may also be floated with a hard neoprene style float.

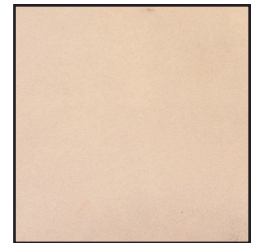
Application: Fine and Super Fine Texture:

For the first coat, apply MX Acrylic Finish as a basecoat over the brown coat. (See Application Tools for Merlex MX Primer). When the basecoat is sufficiently dry so the aggregate cannot be moved with the fingertips, apply the second and final coat of MX Acrylic Finish.

For a float texture apply a tight coat of MX Acrylic Finish and float as described above. For Smooth, Semi Smooth or Random Textures apply MX Acrylic Finish and work the material with the trowel for the minimum amount of passes to achieve the desired effect.



Fine



Super Fine

Drying Time:

Care should be taken to protect walls from excessive heat and wind. These conditions can create surface cracking in the finish material. Cold, moist conditions will extend the drying time required for MX Acrylic Finish. Protect MX Acrylic Finish from inclement weather conditions. Merlex MX Primer is recommended for temperatures above 75°F / 23.9°C or when the style of texture will expose the underlying substrate. Due to the possibility of extended drying time during cold, wet conditions, care should be taken to make sure the entire film thickness is dry before removing protections from the weather.

Limitations:

Use MX Acrylic Finish only when the ambient temperature and the temperature of the portland cement surface are above 40°F / 4.4°C during both the application and the drying period. Dark colored finishes are prone to fading. Dark colors should be reserved for accent colors only. MX Acrylic Finish shall not be applied on surfaces with a slope less than 30 degrees. In some climates the minimum slope should be greater than 30° to avoid buildup of ice or snow over the coating. MX Acrylic Finish shall not be exposed to runoff from downspouts and scuppers or other water drainage hazards. MX Acrylic Finish is manufactured as a wall coating and must be protected from standing water. MX Acrylic Finish shall not be applied to any below grade surface. MX Acrylic Finish is not a component of EIFS. MX Acrylic Finish may not be used for finishing EIFS and use of the product as a component of an EIFS assembly voids all warranties by Merlex Stucco, Inc.

Warranty:

Merlex Stucco, Inc. warrants its products to be of merchantable quality and suitable for the general purpose for which they were intended, when applied in accordance with Merlex Stucco instructions. Merlex Stucco does not warrant its products to be suitable for any purpose or use other than for which they were intended. Liability under this warranty is limited to supplying new material without charge, or at manufacturers of Merlex Stucco option, to a refund of the purchase price. In the event of a claim under this warranty, written notice must be given to the originating plant of the Merlex Stucco goods at the address shown hereon. This limited warranty is issued and accepted in lieu of all other expressed warranties, and expressly excludes liability for consequential damages. Some states do not allow the exclusion or limitation of incidental or consequential damages, or limitations on how long an implied warranty lasts, so the above limitations and exclusions may not apply to you. This warranty gives you specific legal rights, and you may also have other rights that vary from state to state.